



Installation Manual

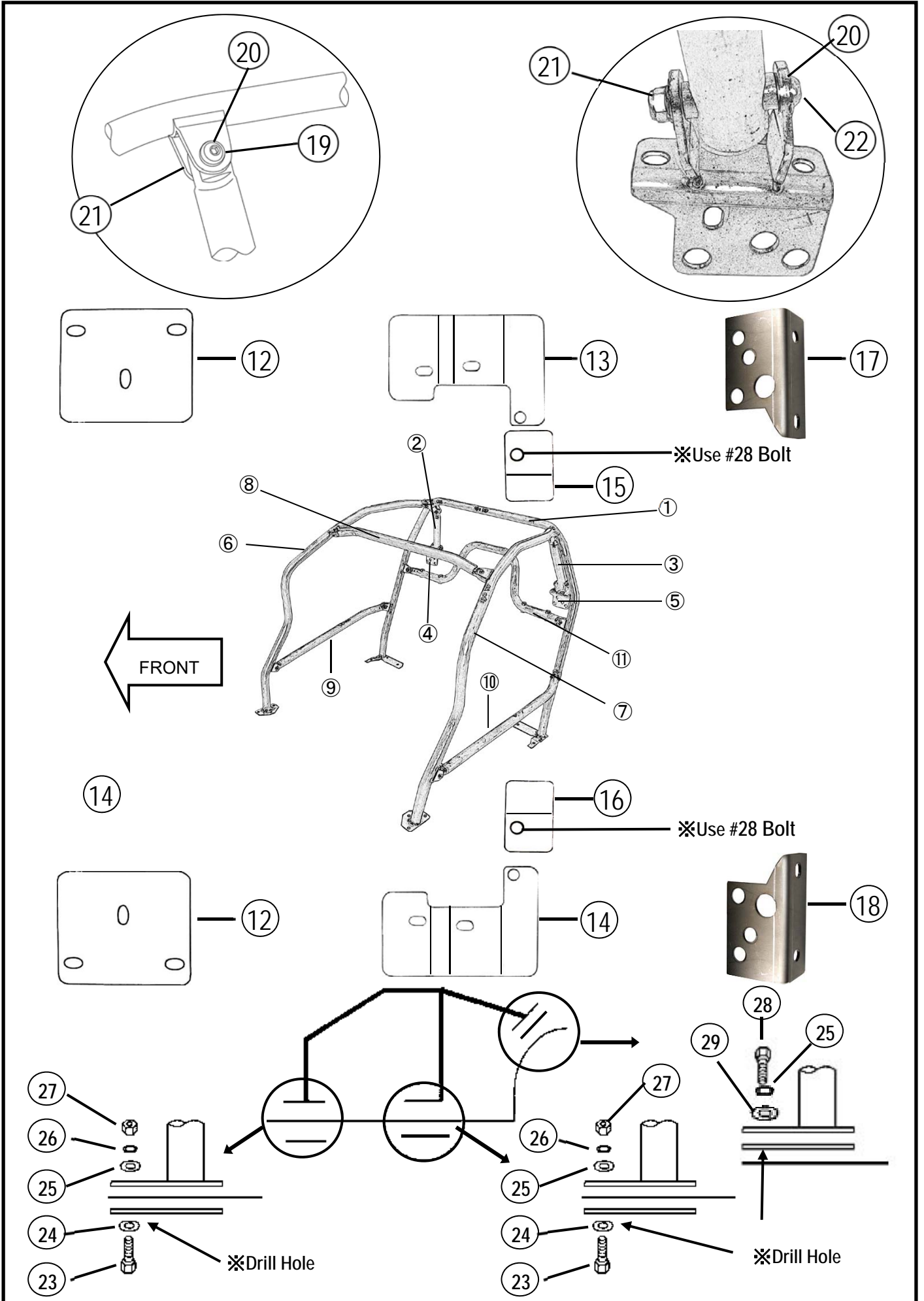
2016+ Mazda MX-5 / Roadster (ND5)

For CUSCO D1 Chromoly & Safety21 Roll Cage (4-Point & 6-Point)

- Require cutting floor carpet and drilling Floor Panel
- CUSCO Roll Cage Kit cannot be used with OEM Seat Back Bar, Seat Back Bar Garnishment, Sun Visors and Assist Grip

[Component List] – Please see next page for details

		4-Point	4-Point Harness Bar	6-Point	6-Point Harness Bar	6-Point Side Bars	6-Point Harness/Side Bars
#1	Main Hoop Bar	1	1	1	1	1	1
#2	Rear Bar, Right	1	1	1	1	1	1
#3	Rear Bar, Left	1	1	1	1	1	1
#4	Rear Bar Bracket, Right	1	1	1	1	1	1
#5	Rear Bar Bracket, Left	1	1	1	1	1	1
#6	Front Bar, Right	-	-	1	1	1	1
#7	Front Bar, Left	-	-	1	1	1	1
#8	Front Top Side Bar	-	-	1	1	1	1
#9	Side Bar, Right	-	-	-	-	1	1
#10	Side Bar, Left	-	-	-	-	1	1
#11	Harness Bar	-	1	-	1	-	1
#12	Attachment Base Plate (For Front Bars)	-	-	2	2	2	2
#13	Attachment Base Plate (Main Hoop, Right)	1	1	1	1	1	1
#14	Attachment Base Plate (Main Hoop, Left)	1	1	1	1	1	1
#15	Attachment Base Plate (Main Hoop, Right)	1	1	1	1	1	1
#16	Attachment Base Plate (Main Hoop, Left)	1	1	1	1	1	1
#17	Attachment Base Plate (Rear Bar, Right)	1	1	1	1	1	1
#18	Attachment Plate (Rear Bar, Left)	1	1	1	1	1	1
#19	Bolt, M10x45mm	2	4	6	8	10	12
#20	Washer, M10	4	6	8	10	12	14
#21	Nut, M10	4	6	8	10	12	14
#22	Bolt M10x75mm	2	2	2	2	2	2
#23	Bolt M8x25mm	6	6	12	12	12	12
#24	Washer, M8	8	8	14	14	14	14
#25	Washer, M8	8	8	14	14	14	14
#26	Spring Washer, M8	14	14	20	20	20	20
#27	Nut, M8	8	8	14	14	14	14
#28	Bolt, M8x30mm	8	8	8	8	8	8
#29	Washer, M8 (25mm OD, t=3.2mm)	6	6	6	6	6	6

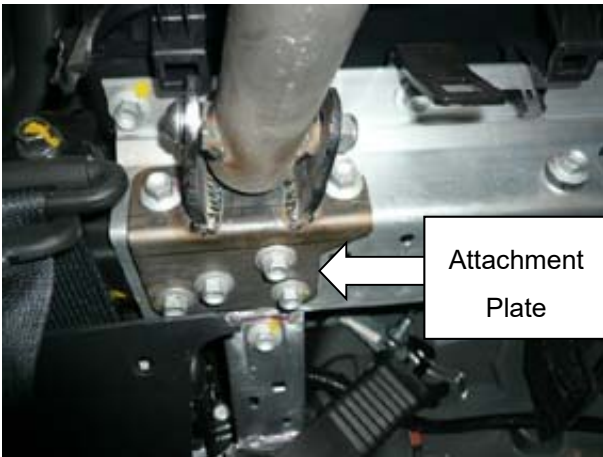




[Main Hoop Installation]

- Remove under coat
- Use M8x30mm bolt to inner side only as picture show.

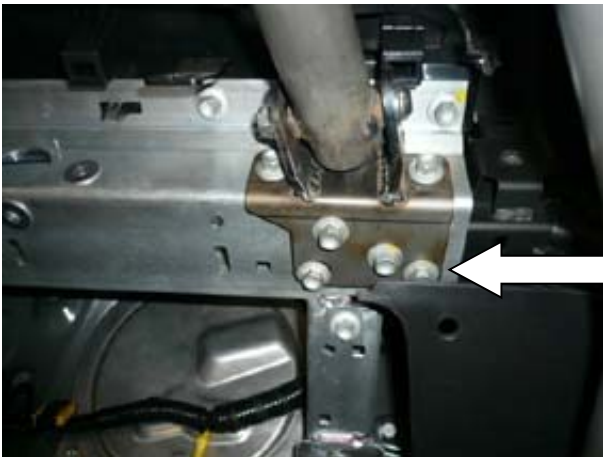
M8x30mm Bolt



[Rear Bar Installation]

- Remove Seat Back Bar and install attachment plate and rear bar bracket as showing the picture by using supplied hardware.
- Re-use OEM Bolt x 3 pcs and use supplied 3 sets of M8x30mm bolt, Spring Washer and Washer (M8, 25mm OD, t=3.2mm)

Attachment Plate



Attachment Plate





[Front Bar Installation]

- Before installing front bar, please sit the bar on the location and make sure there is no interference between bash board and doors.
(If needed to use the rollcage protection pads, please install the pads on the rollcage first before installing the rollcage on the vehicle)



Remove undercoat in rollcage attachment plate area only.



Front Top Side Bar Installation

- Please install the front top side bar as showing picture.
- Please make sure if the soft top can be closed smoothly.



[Assembly images for 6-Point Rollcage with Harness & Side Bars]



[4-Point Rollcage with Harness Bar]

